



MONTHLY MEMBERSHIP PROGRESS REPORT

District 11 A1

Results as of: 05/31/2018

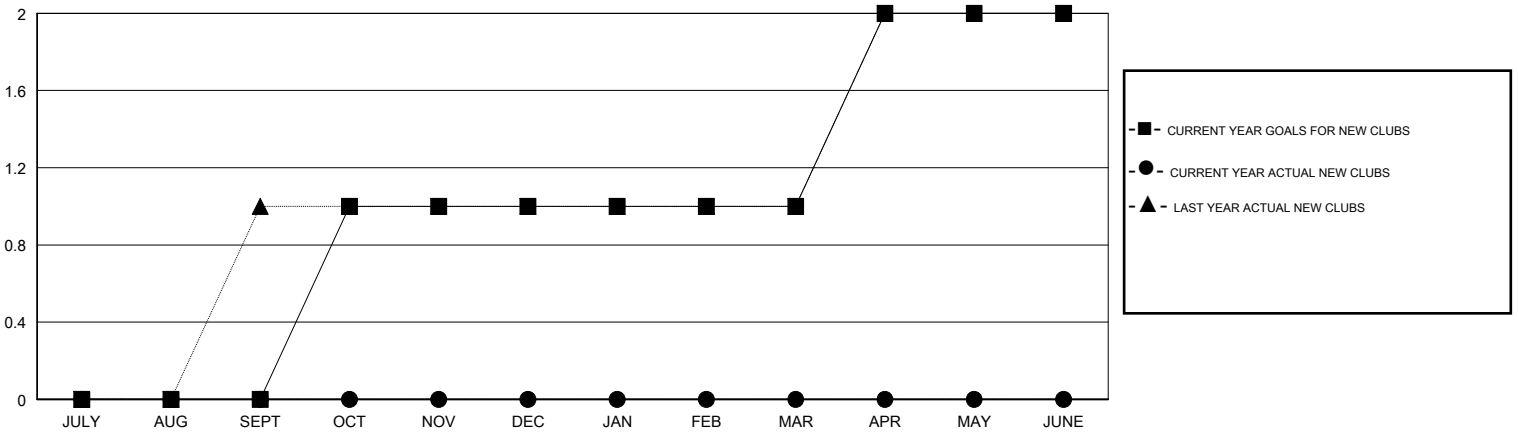
GMT: STEVE ANTON

LOCATION MICHIGAN

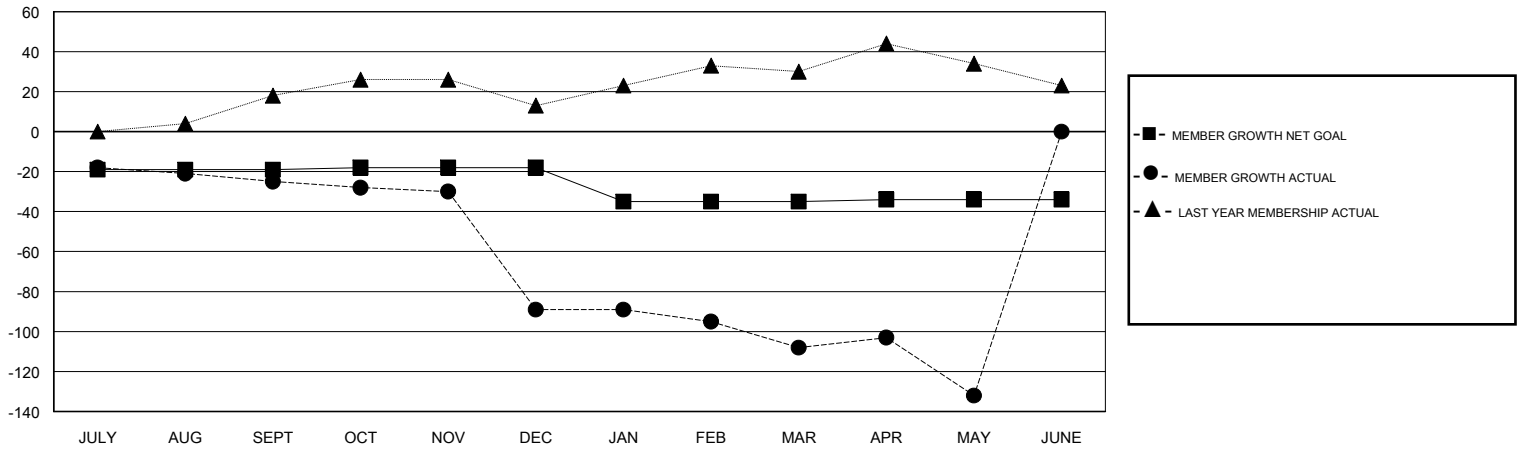
GMT CA

Clubs				Members			
RESULTS FOR 2017-2018				RESULTS FOR 2017-2018			
QUARTER	NEW CLUB GOAL	NEW CLUBS	DROPPED CLUBS	QUARTER	MEMBER GROWTH NET GOAL	MEMBER GROWTH ACTUAL	DROPPED MEMBERS ACTUAL (including transfers)
JULY/AUG/SEPT	0	0	0	JULY/AUG/SEPT	-19	25	47
OCT/NOV/DEC	1	0	2	OCT/NOV/DEC	1	11	73
JAN/FEB/MAR	0	0	0	JAN/FEB/MAR	-17	24	33
APR/MAY/JUNE	1	0	1	APR/MAY/JUNE	1	31	37

GOALS AND ACTUAL NEW CLUBS CUMULATIVE



GOALS AND ACTUAL MEMBERS CUMULATIVE



DROPPED CLUBS: 3	20 CLUBS OF 38 ADDED 1 OR MORE NEW MEMBERS	<u>GENDER DISTRIBUTION</u> MALE 539 (65.41%) FEMALE 285 (34.59%) Women Percentage Fiscal Year Goal: 34%
<u>DROPPED MEMBERS</u> DECEASED 21 CLUB CANCELLED 41 OTHER 128 TOTAL 190	CLICK HERE FOR CUMULATIVE MEMBERSHIP DATA	TOTAL FAMILY UNIT MEMBERS 156 FAMILY MEMBERS PAYING HALF DUES 82